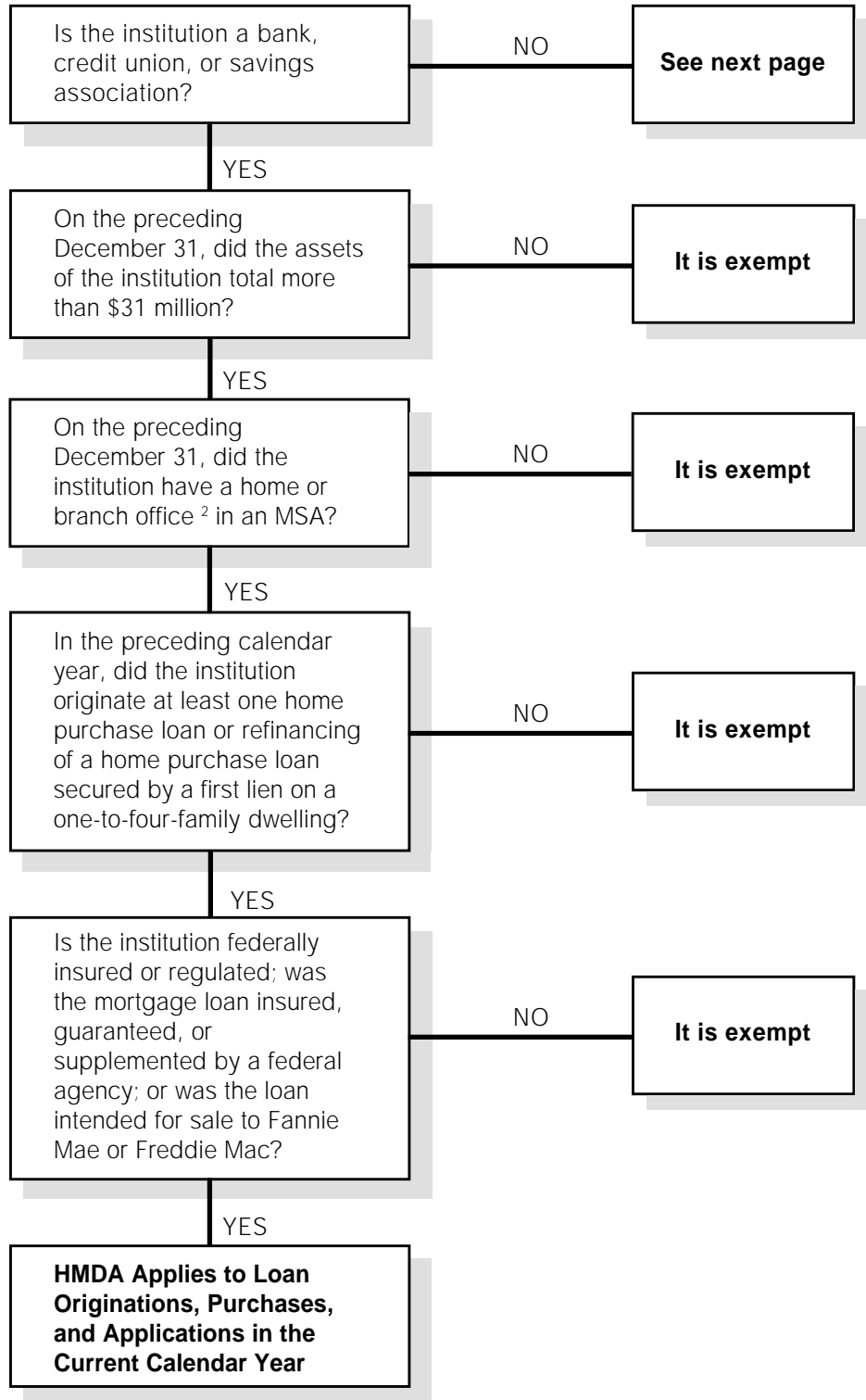


Coverage  
Criteria  
for Depository  
Institutions



<sup>2</sup> For depository institutions, a branch office is an office approved as a branch by a supervisory agency (except that a branch office of a credit union is any office where member accounts are established or loans are made, whether or not the office has been approved as a branch by a federal or state agency). A branch office does not include offices of affiliates or other third parties such as loan brokers, or other offices where loan applications are merely taken; nor does it include ATMs or other electronic terminals.